



22ND NEW ZEALAND SCOUT JAMBOREE

MYSTERIES UNSOLVED

PARAIRE
3RD HĀNUERE

MYSTERY TOUR - CAMBRIDGE

Daniel, Will, and Jono from the Southern Stars, were asked what they had done on the mystery tour and if they had any tips for others going on this tour.

They played mini-golf and also got to ride on go-karts made out of old shopping trolleys. Next, they went for a long walk. They crossed a huge bridge which is 110 years old. On the way back, they walked down to the river below the bridge. They discovered lots of pigeons nesting under there.

Their best tip for Scouts going on this tour was about the mini-golf:

“When playing mini-golf, make sure you don’t trip over the low walls. It can hurt. Also, don’t hit balls into the water or you might be fined a badge.”

MYSTERY TOUR - PUTARURU

Douglas, Jade, Chloe, Tom, Lindsay & Theo from Port Hills went on the mystery tour to Putaruru.

First, they visited a cheese factory and saw how to make Mozzarella cheese. It was really stringy and tasted like rubber. At a nearby site they used heated metal letters to burn their names into wood. Then went to another place where they made scones. There were flies everywhere, which was yucky. In the timber museum, there were lots of rooms with different machines and models, showing de-barking, sawmilling and how they used to cut timber by hand but now use chainsaws. After lunch the group went on the Blue Springs walk. This took about two hours, including a few stops. The water was so blue, so you could see how it got the name.

It was very beautiful. The walk was good: very peaceful, but HOT.



WEATHER FOR TOMORROW

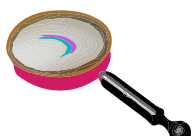
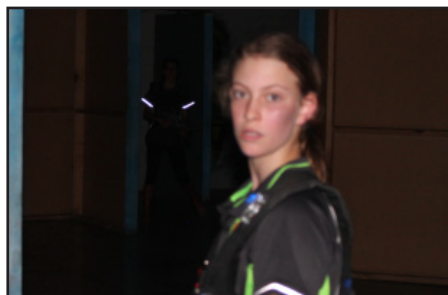
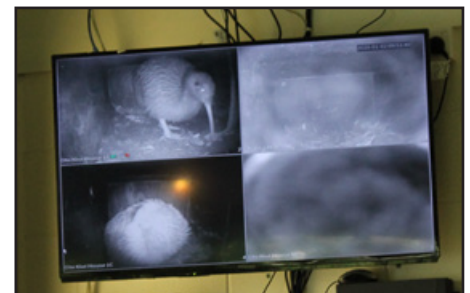
Sat



19° 10°

Check List for the Day
ID Tag
Waterbottle
Sunhat
Sunscreen

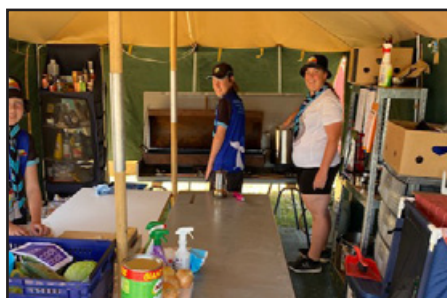
MYSTERY TOURS



Have you seen yourself?

Come to the Media Team office after between 7 and 9 pm to collect a prize!

CAMP KITCHENS



Wonderful Inventive Scout Camp Kitchens

JAMBOREE PATROL MYSTERY

Solve the puzzles and write the answers in your Jamboree manual.

More clues to come in future editions:

13 Dot Dot Dot

14 The three wise men followed a star. Wise scouts should follow the Red Cross. Check it out.



15

16 The male lead role of a tragic play written by Shakespeare. He also appears in the phonetic alphabet.

17 First letter of Charlie Brown's best friend

18 Look for the gates to a thespian's workplace. Its wings will lead you to the answer you are looking for. Take a look.

MYSTERY TOUR - HAMILTON

Ricky and Max from BAM! and the Pink Panthers patrol from the Cape Hawkes visited Hamilton for their mystery tour. The Scouts described the tour as: "the mystery was mysterious" and "the bus tour was awesome."

They started by going to Leap & Laser. Leap includes a trampoline park, dodge ball, and basketball. Laser included a James Bond style laser maze where two people race through the maze. They suggested that if you get this activity, crawling is the best way to get across.

Next was rock climbing. There are several

climbs of different levels. They have themed names, including "King Kong" and "Road Runner". Ricky and Max started with the more difficult climbs because there were queues for the easy ones. The Scouts said that the auto belay can be a bit scary. Their tip for this activity was to trust the equipment.

The Scouts also did some orienteering in the Hamilton Botanic Gardens and cemetery or as they called it, the dead centre of town. They said that they wish they had used their eyes: there's a lot to see and to bring lots and water and drink it.

HOKOWHITU'S CHIEF SCOUT

Hokowhitu Scouts, known at Jamboree as the Palmy Panthers, had a special ceremony on 1st January for Stephen Hamblyn who received his Chief Scout award. It was a special day as his parents surprised him by being here for the presentation.



GIVING BACK



James, Antony, Austin, McLean, and Jack decided to donate two hat-fulls of badges into our Mystery Creek Scout Hospital.

Antony said, "It's important to us that everyone has a fair chance, we wanted to give back to the Jamboree and help some of our Scouts who can't get out and swap badges and if you're in hospital you can't do that."

"We love Jamboree and loved the mystery. It has been amazing meeting Scouts we don't know and hanging out."

Thank you to these Scouts who have given selflessly

BRAVO!

JOKE OF THE DAY

Q: What happens to a frog's car when it breaks down?

A: It gets toad away

I'm reading a book about anti-gravity, it's impossible to put down.

Q: What do you call a bee that can't make up its mind?

A: A may-bee

DAY BADGES

Tomorrow's day badge money raised will be donated to the Australian Wild Fires fighting fund.

LOST PROPERTY

Like any gathering of Scouts, we have a growing list of lost property, please come in to the HUB if you have lost anything and see if it has turned up. Yes, the tent is still here.

THEN AND NOW



Here is a copy of the 1959 Jamboree Souvenir edition Newspaper. It is over 30 pages long and was the only form of widespread communication at that Jamboree.

How different is it to this Jamboree's available media?

NOTICES

Badgers Club get together is on tomorrow at 7.30pm, meet at the Badgers Club tent.

Reminder that badge swapping rules 1 to 1 only.

Bread Tag progress 178,200 collected = 99kg, continue to drop off at the HUB or Home Zone.

Any bagpipe players and scottish drummers please see Vickylee at special Events ASAP.

Camp Fire

Anyone with ashes please register at the HUB. Camp Fire starts at 6.30pm tomorrow.

Reminder about International Night concert. Meet at your Village Green at 6.30pm to be escorted into the Pavillion by Host Corps.

JP GOAL OF THE DAY

Give respect to yourself and others

SPOTLIGHT ON THE WELLBEING CENTRE

The Wellbeing Centre provides an opportunity for Scouts to take a break from their busy day at Jamboree. The Wellbeing Team want to make a safe environment that promotes positivity. There are activities available every day. There is a positivity-tree where you can write positive messages. You can also find a colouring-in mural that has a new mystery design each day. There are games, puzzles, and a quiet space with pillows, blankets and bean bags for you to take a break from your day.

If you are feeling stressed or need to take a break, make sure you tell your leaders where you are going, drink water and take the time you need so you can enjoy the rest of your Jamboree. Also, look out for your friends and other Scouts to make sure they are feeling okay too. The Wellbeing Centre is open from

8am until 10.30pm and is located outside the Pavilion in a large white marquee opposite the leader's cafe. All Scouts, Venturers, Leaders and other staff are welcome to visit the Wellbeing Centre as this space is available for everyone. The team at the Wellbeing Centre are very approachable and welcoming and would love to see you guys there.



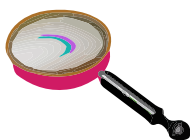
SHOP NEWS

New stock has arrived, check it out at the Jamboree Shop.


Shop will be closing at 4pm this afternoon and reopening tomorrow morning at 10am.

PUZZLE

Answers to the media team



First 10 entries back will get a prize each day. Media Office will be open to receive entries between 7pm and 9pm tonight.

REBUS PUZZLES	STOOD MISS	Somewhere 	In vaders
ST  RM	STA ND	GET A WORD IN	<i>Chair</i>
ROOD	BUSINES	ONCE 	MILLION